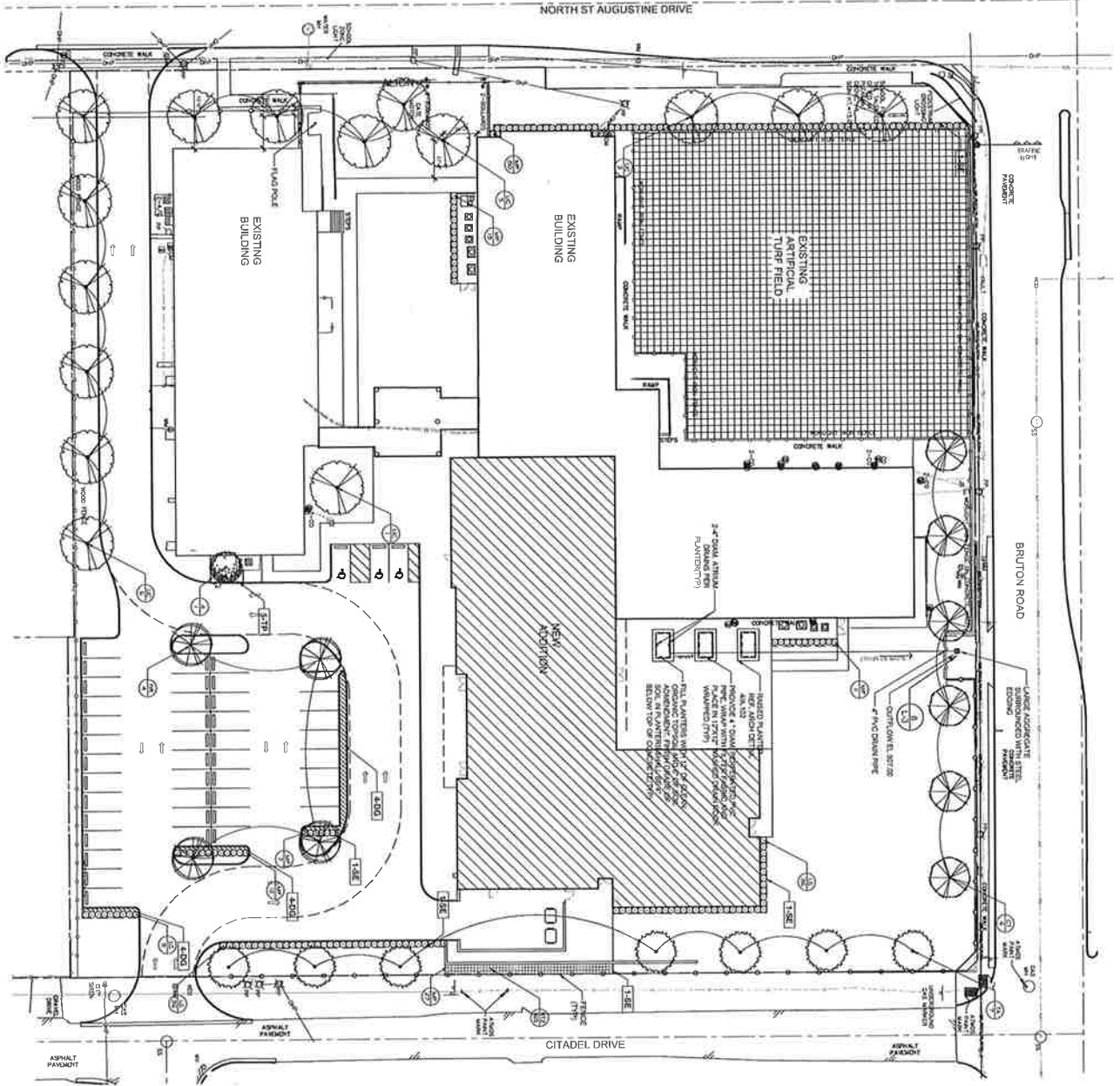


1 LANDSCAPE PLAN

Planned Development  
District No. 484



- GENERAL PLANTING NOTES**
1. ALL PLANTING SHALL BE INSTALLED IN ACCORDANCE WITH THE CITY OF DALLAS PLANTING SPECIFICATIONS AND THE TEXAS PLANTING SPECIFICATIONS.
  2. ALL PLANTING SHALL BE INSTALLED IN ACCORDANCE WITH THE CITY OF DALLAS PLANTING SPECIFICATIONS AND THE TEXAS PLANTING SPECIFICATIONS.
  3. ALL PLANTING SHALL BE INSTALLED IN ACCORDANCE WITH THE CITY OF DALLAS PLANTING SPECIFICATIONS AND THE TEXAS PLANTING SPECIFICATIONS.
  4. ALL PLANTING SHALL BE INSTALLED IN ACCORDANCE WITH THE CITY OF DALLAS PLANTING SPECIFICATIONS AND THE TEXAS PLANTING SPECIFICATIONS.
  5. ALL PLANTING SHALL BE INSTALLED IN ACCORDANCE WITH THE CITY OF DALLAS PLANTING SPECIFICATIONS AND THE TEXAS PLANTING SPECIFICATIONS.

**REFERENCE NOTES SCHEDULE**

SYMBOL	DESCRIPTION
1-30	STREET LIGHT POLE
1-31	STREET LIGHT POLE WITH 500
1-32	STREET LIGHT POLE WITH 500
1-33	STREET LIGHT POLE WITH 500
1-34	STREET LIGHT POLE WITH 500
1-35	STREET LIGHT POLE WITH 500

**PLANT SCHEDULE**

SYMBOL	DESCRIPTION	QUANTITY	SIZE	HEIGHT	SPACING	NOTES
1-36	STREET LIGHT POLE	1	500	10'		
1-37	STREET LIGHT POLE WITH 500	1	500	10'		
1-38	STREET LIGHT POLE WITH 500	1	500	10'		
1-39	STREET LIGHT POLE WITH 500	1	500	10'		
1-40	STREET LIGHT POLE WITH 500	1	500	10'		

Approved  
City Plan Commission  
July 23, 2020

2:190-248

E363. NO. P0027-3  
**SCHOOL FOR THE TALENTED AND GIFTED IN PLEASANT GROVE**  
9610 BRUTON ROAD DALLAS, TEXAS 75217

**RPGA DESIGN GROUP, INC.**  
ARCHITECTURE SPACE PLANNING

**JRI**

PROJECT NO. 201350  
DATE: 08/28/2014  
SCALE: AS SHOWN  
SHEET NO. 1 OF 1

2015  
BOND PROGRAM

L-2